

**Tamil Nadu Apex Skill Development
Center for Logistics**

ANNUAL REPORT

2021-2022



Call Find Us

+91 9150078909



Website us

www.tnasdcl.in

CONTENT INDEX



- I. AN OVERVIEW (Company formation, Board of Directors, Vision Mission, Time Line, Registrations, Mandate)**
- II. SKILLING INITIATIVES – Institution Skilling & Upskilling in Industries**
- III. MoU & TIE-UPS Empanelment's**
- IV. VISITS & OTHER ACTIVITIES**
- V. FINANCIAL REPORT**

Board of Directors – as on 31 Mar 2021



Thiru Mohammed Nasimuddin IAS



Thiru Pradeep Yadav IAS



Thiru K Veera Raghava Rao IAS



Thiru S Arunraj IAS



Thiru. R Dinesh



Thiru Shantanu Shriram
Bhadkamkar



Captain Ramanujan T



Thiru R Giridharan



AN OVERVIEW

CHRONOLOGY OF EVENTS - TENDER TO REGISTRATION

TNSDC invited
EoI - 2018

2019 - Project
Appraised &
Selected by
• Commissioner
Emp. Training
• ED, TNSDC &
• NSDC members

2019 Project
awarded to LSC
by TNSDC
• Labour
Secretary
• ED, TNSDC

MoU TNSDC & LSC
– 30 Nov 2019
• Labour Secretary
• CEO, LSSC

Company
Reg. July –
27 Jul 2020

Tamil Nadu Apex Skill Development Centre for Logistics (TNASDCL) is a PPP initiative setup with 50:50 partnership between Tamil Nadu Skill Development Corporation (TNSDC) and a consortium of 3 industries viz. TVS Supply Chain Solutions, Association of Multi-modal Transport Operators of India (AMTOI) and Logistics Sector Skills Council (LSC), to meet the skilled manpower requirement pertaining to various sub-sectors in Logistics and Transportation.

Sl. No.	Name of the share holder entity	Amount	%
1	M/s. Tamil Nadu Skill Development Corporation	100 lakhs	50.00%
2	LIP (LSC, TVS SCS, AMTOI)	100 lakhs	50.00%

Our Vision

Create qualified workforce in domain expertise in Supply Chain and Logistics Ecosystem which is contemporary and relevant to the industry needs.

Our Mission

- ❖ Impart industry led skill training in cutting edge technology using the state of the art methodology.
 - ❖ Provide consultancy at industries to excel in Manufacturing Excellence.
-

A little History About Us

"Tamil Nadu Apex Skill Development Centre for Logistics (TNASDCL) is a not-for-profit Section 8 company incorporated by the Government of Tamil Nadu Skill Development Corporation (TNSDC) in consortium partnership with Logistics Sector Skill Council (LSC), Association of Multimodal Transport Operators of India (AMTOI) and TVS Supply Chain Solutions."

1.Chronology of Events

2.Objectives

3.Activities thus far to achieve Objectives

- a) Training – i) Infrastructure ii) Faculty iii) Training done

4.Programs and Courses

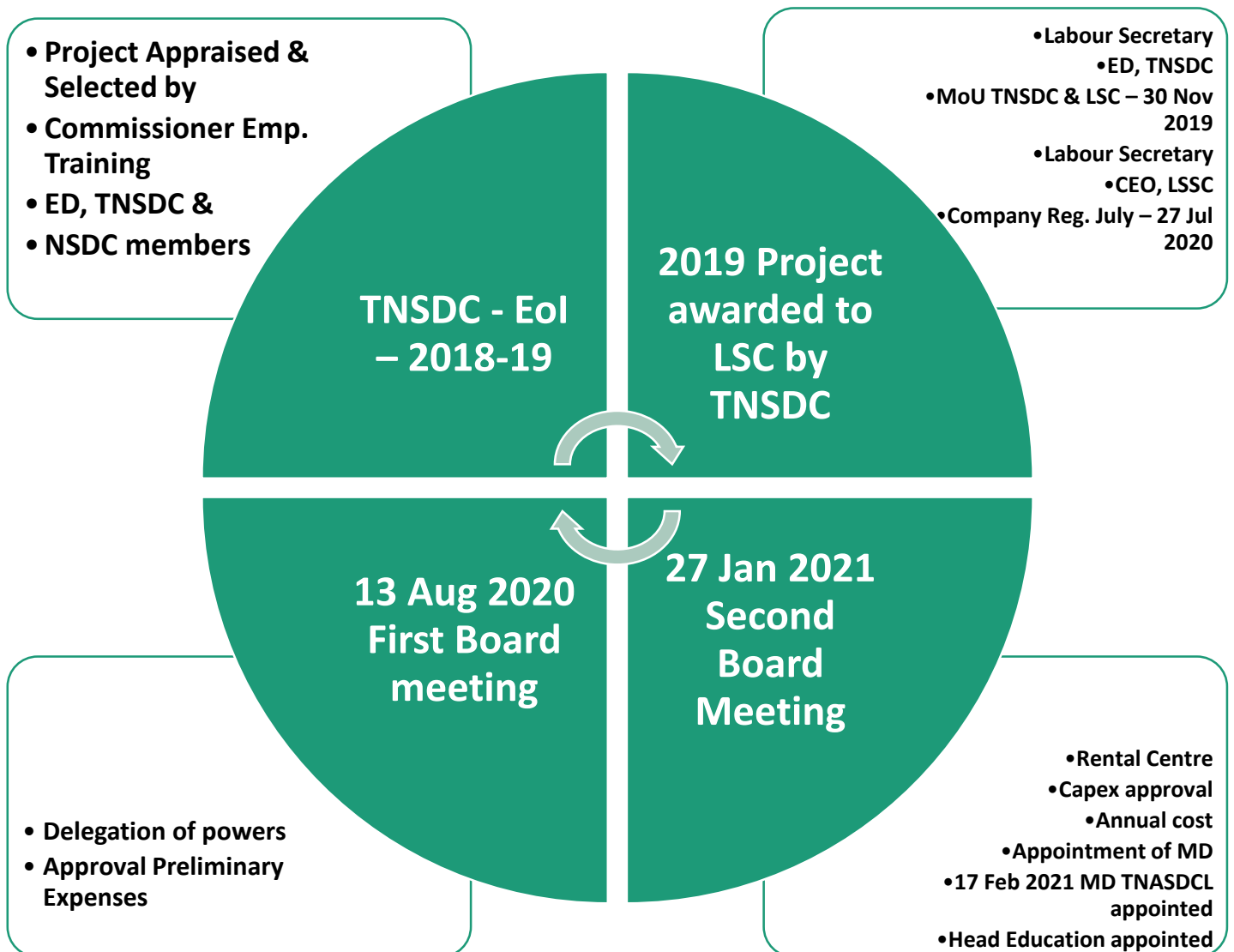
- a) Paid Collaborative Programs- EDP / Upskilling/ Re skilling
- b) Finishing School - Vocational Training
- c) Livelihood/ Assured Employment Programs- under NSDC/ TNSDC
- d) Projects / TRAINING ON cutting edge technology.
- e) Upcoming Programs

5. Collaboration with Agencies

6. Finance - Summary

7. Future Plan

CHRONOLOGY OF EVENTS



OBJECTIVES

Evolve into Centre of Excellence

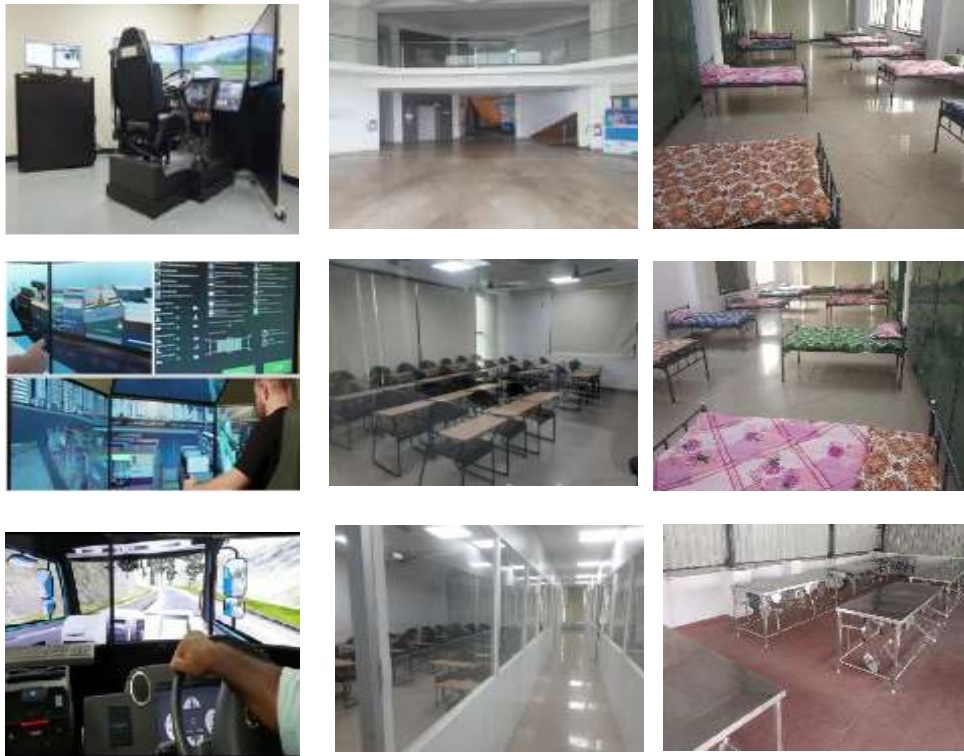
- Coordinate with industry for course content development in the sector
- Nodal institute for Training of Trainers (ToT) in the sector
- Co-ordinate and network with existing training providers to achieve standards
- Guide the training centers in the sector to upgrade in training infra and training content delivery systems
- Coordinate with Govt. / Quasi Govt. agencies to effectively utilize existing infrastructure and manpower to enhance training capacity
- Facilitate the industry linkages for apprenticeship and other on the job training initiatives of the industry
- Collaborate with international academic and vocational institutes to develop training modules to impart hi-end skill training
- Organize specialized corporate training programs to cater to in-house training needs of industries

It has the mandate and capability to skill workforce from entry level to Managerial level in all the 12 subsectors of Logistics

Facilitation services as a Basic Training Provider (BTP) for the National Apprenticeship Promotion Scheme (NAPS)

It is registered as MSME company and is intended to provide consultancy services for the public sector and large companies in the field of logistics and allied services.

The Training Infra centre – Oragadam Chennai



Lab Simulators

Academic Floor

HOSTEL

- Fully furnished AC classrooms : 6 Nos
- Conference hall : 1 No
- Computer lab – capacity 30 Nos
- Heavy Motor Vehicle simulator Lab
- Hostel for trainees : 150 capacity
- Dinning room : 80 seats
- Power backup & 24 H water supply
- Internet connectivity & CCTV
- 24 H security
- Gated Logistics park
- Safety systems installed
- Lift facility
- Bus connectivity

Guest Faculty & Subject Matter Experts

Sl.no	Name	Domain
1	Dr.Samir Yerpude	IOT Block Chain, Logistics 4.0
2	Dr. Raghul	Agri Logistics
3	Dr Venkataramanaiah	Pharma Logistics
4	Mr Pradeep Hegde	Logistics Technology 4.0
5	Mr Unnikrishnan	Port Terminal
6	Dr Aditya Gupta	Warehouse Technology
7	Mr. Prashant Pimpalkhutte	In-Plant Logistics
8	Mr. Samir Shah	EXIM Logistics
9	Mr. M Thiagarajan	In-Plant Logistics - Electronics
10	Mr Srinivasan	Land Transportation
11	Mr Anand	Land Transportation
12	Mr. Sivakumar	Agri Logistics
13	Mr. K.Sathiyaraj	Forklift

TNASDCL Programs / Courses

S.No	Programs Verticals	When
1	Govt. Funded Programs	July 2021 plan
2	EDP/MDP/CBT Programs	Apr 2021 started
3	Job Oriented Training Programs	July 2021 Admission open
4	Paid Collaborative Skilling Programs	2022-2023 onwards
5	Entrepreneurship Creation Certificate/Diploma Programs	2022-2023 onwards

Finishing School – Colleges and Schools Vocational Training Planned

Objective:

To enhance the Students in

- Technical Competency
- Method Competency
- Social Competency and adoption to the industrial culture
- Methodology
 - Pre and post assessment for each module
 - Student centered training sessions
 - Students presentation on case studies
 - Peer Learning

S. No	Level	Modules	Duration (Days)	Total
1	I Level	Manufacturing Excellence	11	20
3		Problem Solving Skills	3	
4		Soft Skills	3	
5		Control Techniques	3	
6	II Level	Manufacturing Excellence	14	20
7		Problem Solving Skills	2	
8		Soft Skills	2	
9		Control Techniques	2	
10	III Level	Manufacturing Excellence	14	32
11		Standards	4	
12		Problem Solving Skills	2	
13		Soft Skills	5	
14		Control Techniques	7	
Total No. of Days				72

FORTH COMING WEBINAR PROGRAMS



SECRETS OF 5S & KAIZEN
WEBINAR BY JAPANESE EXPERT

TOPICS FOR DISCUSSION:
Worldly Changes and Challenges
Secrets of Japanese Industry Success
5S and Kaizen - Origin and Meaning
5S - HOW TO DO IT
Theoretical and Practical Cases

NOTE:
Certificate will be given to all the Participants
Subject to the availability of the certificate
For Registration Visit tnasdc.in

Mr. TOMIO ISOGAI
40 Years of Experience in
Manufacturing Industry
Formerly worked for Toyota Motor Corp.
and now for a Japanese Company in India

04/06/2021 (FRIDAY)
3:00PM - 5:00PM

TO CONTACT:
Mr. Adarsh Kumar, Jr.
9786107747 / 9884214514



24-06-2021 (THURSDAY)
3:00PM - 5:00PM

TN APEX SKILL DEVELOPMENT CENTRE FOR LOGISTICS WITH GATE ACADEMY PRESENTS

MAKE INDIA STRONG

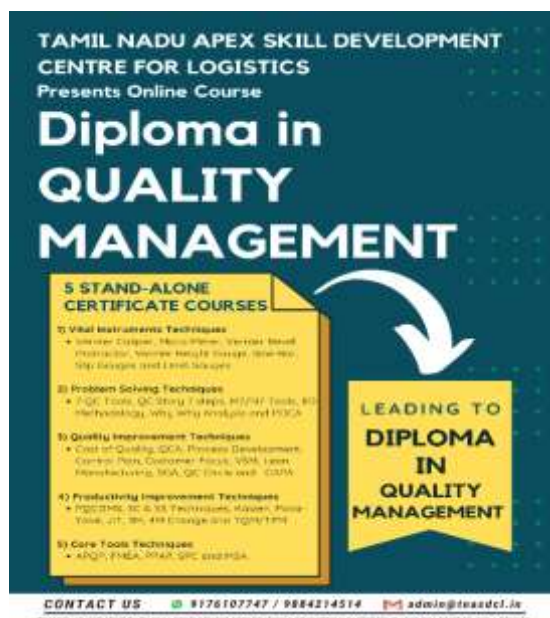
WEBINAR BY:
MAJ GEN RAJESH KUNDE
AVSM, SM

TOPIC FOR DISCUSSION:
1. IMPORTANCE OF LOGISTICS TO ASPIRE INDIA
2. LOGISTICS TO MAKE INDIA STRONG
3. LOGISTICS TO MAKE INDIA STRONG
4. LOGISTICS TO MAKE INDIA STRONG
5. LOGISTICS TO MAKE INDIA STRONG
6. LOGISTICS TO MAKE INDIA STRONG
7. LOGISTICS TO MAKE INDIA STRONG
8. LOGISTICS TO MAKE INDIA STRONG
9. LOGISTICS TO MAKE INDIA STRONG
10. LOGISTICS TO MAKE INDIA STRONG

FOR REGISTRATION VISIT:
tnasdc.in/delagate/registration/MIS

OR SCAN QR

FORTH COMING ONLINE PROGRAMS



TAMIL NADU APEX SKILL DEVELOPMENT CENTRE FOR LOGISTICS
Presents Online Course

Diploma in QUALITY MANAGEMENT

5 STAND-ALONE CERTIFICATE COURSES

- Visual Instrument Techniques**
• 5S, 6S, 7S, 8S, 9S, 10S, 11S, 12S, 13S, 14S, 15S, 16S, 17S, 18S, 19S, 20S, 21S, 22S, 23S, 24S, 25S, 26S, 27S, 28S, 29S, 30S, 31S, 32S, 33S, 34S, 35S, 36S, 37S, 38S, 39S, 40S, 41S, 42S, 43S, 44S, 45S, 46S, 47S, 48S, 49S, 50S, 51S, 52S, 53S, 54S, 55S, 56S, 57S, 58S, 59S, 60S, 61S, 62S, 63S, 64S, 65S, 66S, 67S, 68S, 69S, 70S, 71S, 72S, 73S, 74S, 75S, 76S, 77S, 78S, 79S, 80S, 81S, 82S, 83S, 84S, 85S, 86S, 87S, 88S, 89S, 90S, 91S, 92S, 93S, 94S, 95S, 96S, 97S, 98S, 99S, 100S, 101S, 102S, 103S, 104S, 105S, 106S, 107S, 108S, 109S, 110S, 111S, 112S, 113S, 114S, 115S, 116S, 117S, 118S, 119S, 120S, 121S, 122S, 123S, 124S, 125S, 126S, 127S, 128S, 129S, 130S, 131S, 132S, 133S, 134S, 135S, 136S, 137S, 138S, 139S, 140S, 141S, 142S, 143S, 144S, 145S, 146S, 147S, 148S, 149S, 150S, 151S, 152S, 153S, 154S, 155S, 156S, 157S, 158S, 159S, 160S, 161S, 162S, 163S, 164S, 165S, 166S, 167S, 168S, 169S, 170S, 171S, 172S, 173S, 174S, 175S, 176S, 177S, 178S, 179S, 180S, 181S, 182S, 183S, 184S, 185S, 186S, 187S, 188S, 189S, 190S, 191S, 192S, 193S, 194S, 195S, 196S, 197S, 198S, 199S, 200S, 201S, 202S, 203S, 204S, 205S, 206S, 207S, 208S, 209S, 210S, 211S, 212S, 213S, 214S, 215S, 216S, 217S, 218S, 219S, 220S, 221S, 222S, 223S, 224S, 225S, 226S, 227S, 228S, 229S, 230S, 231S, 232S, 233S, 234S, 235S, 236S, 237S, 238S, 239S, 240S, 241S, 242S, 243S, 244S, 245S, 246S, 247S, 248S, 249S, 250S, 251S, 252S, 253S, 254S, 255S, 256S, 257S, 258S, 259S, 260S, 261S, 262S, 263S, 264S, 265S, 266S, 267S, 268S, 269S, 270S, 271S, 272S, 273S, 274S, 275S, 276S, 277S, 278S, 279S, 280S, 281S, 282S, 283S, 284S, 285S, 286S, 287S, 288S, 289S, 290S, 291S, 292S, 293S, 294S, 295S, 296S, 297S, 298S, 299S, 300S, 301S, 302S, 303S, 304S, 305S, 306S, 307S, 308S, 309S, 310S, 311S, 312S, 313S, 314S, 315S, 316S, 317S, 318S, 319S, 320S, 321S, 322S, 323S, 324S, 325S, 326S, 327S, 328S, 329S, 330S, 331S, 332S, 333S, 334S, 335S, 336S, 337S, 338S, 339S, 340S, 341S, 342S, 343S, 344S, 345S, 346S, 347S, 348S, 349S, 350S, 351S, 352S, 353S, 354S, 355S, 356S, 357S, 358S, 359S, 360S, 361S, 362S, 363S, 364S, 365S, 366S, 367S, 368S, 369S, 370S, 371S, 372S, 373S, 374S, 375S, 376S, 377S, 378S, 379S, 380S, 381S, 382S, 383S, 384S, 385S, 386S, 387S, 388S, 389S, 390S, 391S, 392S, 393S, 394S, 395S, 396S, 397S, 398S, 399S, 400S, 401S, 402S, 403S, 404S, 405S, 406S, 407S, 408S, 409S, 410S, 411S, 412S, 413S, 414S, 415S, 416S, 417S, 418S, 419S, 420S, 421S, 422S, 423S, 424S, 425S, 426S, 427S, 428S, 429S, 430S, 431S, 432S, 433S, 434S, 435S, 436S, 437S, 438S, 439S, 440S, 441S, 442S, 443S, 444S, 445S, 446S, 447S, 448S, 449S, 450S, 451S, 452S, 453S, 454S, 455S, 456S, 457S, 458S, 459S, 460S, 461S, 462S, 463S, 464S, 465S, 466S, 467S, 468S, 469S, 470S, 471S, 472S, 473S, 474S, 475S, 476S, 477S, 478S, 479S, 480S, 481S, 482S, 483S, 484S, 485S, 486S, 487S, 488S, 489S, 490S, 491S, 492S, 493S, 494S, 495S, 496S, 497S, 498S, 499S, 500S, 501S, 502S, 503S, 504S, 505S, 506S, 507S, 508S, 509S, 510S, 511S, 512S, 513S, 514S, 515S, 516S, 517S, 518S, 519S, 520S, 521S, 522S, 523S, 524S, 525S, 526S, 527S, 528S, 529S, 530S, 531S, 532S, 533S, 534S, 535S, 536S, 537S, 538S, 539S, 540S, 541S, 542S, 543S, 544S, 545S, 546S, 547S, 548S, 549S, 550S, 551S, 552S, 553S, 554S, 555S, 556S, 557S, 558S, 559S, 560S, 561S, 562S, 563S, 564S, 565S, 566S, 567S, 568S, 569S, 570S, 571S, 572S, 573S, 574S, 575S, 576S, 577S, 578S, 579S, 580S, 581S, 582S, 583S, 584S, 585S, 586S, 587S, 588S, 589S, 590S, 591S, 592S, 593S, 594S, 595S, 596S, 597S, 598S, 599S, 600S, 601S, 602S, 603S, 604S, 605S, 606S, 607S, 608S, 609S, 610S, 611S, 612S, 613S, 614S, 615S, 616S, 617S, 618S, 619S, 620S, 621S, 622S, 623S, 624S, 625S, 626S, 627S, 628S, 629S, 630S, 631S, 632S, 633S, 634S, 635S, 636S, 637S, 638S, 639S, 640S, 641S, 642S, 643S, 644S, 645S, 646S, 647S, 648S, 649S, 650S, 651S, 652S, 653S, 654S, 655S, 656S, 657S, 658S, 659S, 660S, 661S, 662S, 663S, 664S, 665S, 666S, 667S, 668S, 669S, 670S, 671S, 672S, 673S, 674S, 675S, 676S, 677S, 678S, 679S, 680S, 681S, 682S, 683S, 684S, 685S, 686S, 687S, 688S, 689S, 690S, 691S, 692S, 693S, 694S, 695S, 696S, 697S, 698S, 699S, 700S, 701S, 702S, 703S, 704S, 705S, 706S, 707S, 708S, 709S, 710S, 711S, 712S, 713S, 714S, 715S, 716S, 717S, 718S, 719S, 720S, 721S, 722S, 723S, 724S, 725S, 726S, 727S, 728S, 729S, 730S, 731S, 732S, 733S, 734S, 735S, 736S, 737S, 738S, 739S, 740S, 741S, 742S, 743S, 744S, 745S, 746S, 747S, 748S, 749S, 750S, 751S, 752S, 753S, 754S, 755S, 756S, 757S, 758S, 759S, 760S, 761S, 762S, 763S, 764S, 765S, 766S, 767S, 768S, 769S, 770S, 771S, 772S, 773S, 774S, 775S, 776S, 777S, 778S, 779S, 780S, 781S, 782S, 783S, 784S, 785S, 786S, 787S, 788S, 789S, 790S, 791S, 792S, 793S, 794S, 795S, 796S, 797S, 798S, 799S, 800S, 801S, 802S, 803S, 804S, 805S, 806S, 807S, 808S, 809S, 810S, 811S, 812S, 813S, 814S, 815S, 816S, 817S, 818S, 819S, 820S, 821S, 822S, 823S, 824S, 825S, 826S, 827S, 828S, 829S, 830S, 831S, 832S, 833S, 834S, 835S, 836S, 837S, 838S, 839S, 840S, 841S, 842S, 843S, 844S, 845S, 846S, 847S, 848S, 849S, 850S, 851S, 852S, 853S, 854S, 855S, 856S, 857S, 858S, 859S, 860S, 861S, 862S, 863S, 864S, 865S, 866S, 867S, 868S, 869S, 870S, 871S, 872S, 873S, 874S, 875S, 876S, 877S, 878S, 879S, 880S, 881S, 882S, 883S, 884S, 885S, 886S, 887S, 888S, 889S, 890S, 891S, 892S, 893S, 894S, 895S, 896S, 897S, 898S, 899S, 900S, 901S, 902S, 903S, 904S, 905S, 906S, 907S, 908S, 909S, 910S, 911S, 912S, 913S, 914S, 915S, 916S, 917S, 918S, 919S, 920S, 921S, 922S, 923S, 924S, 925S, 926S, 927S, 928S, 929S, 930S, 931S, 932S, 933S, 934S, 935S, 936S, 937S, 938S, 939S, 940S, 941S, 942S, 943S, 944S, 945S, 946S, 947S, 948S, 949S, 950S, 951S, 952S, 953S, 954S, 955S, 956S, 957S, 958S, 959S, 960S, 961S, 962S, 963S, 964S, 965S, 966S, 967S, 968S, 969S, 970S, 971S, 972S, 973S, 974S, 975S, 976S, 977S, 978S, 979S, 980S, 981S, 982S, 983S, 984S, 985S, 986S, 987S, 988S, 989S, 990S, 991S, 992S, 993S, 994S, 995S, 996S, 997S, 998S, 999S, 1000S, 1001S, 1002S, 1003S, 1004S, 1005S, 1006S, 1007S, 1008S, 1009S, 1010S, 1011S, 1012S, 1013S, 1014S, 1015S, 1016S, 1017S, 1018S, 1019S, 1020S, 1021S, 1022S, 1023S, 1024S, 1025S, 1026S, 1027S, 1028S, 1029S, 1030S, 1031S, 1032S, 1033S, 1034S, 1035S, 1036S, 1037S, 1038S, 1039S, 1040S, 1041S, 1042S, 1043S, 1044S, 1045S, 1046S, 1047S, 1048S, 1049S, 1050S, 1051S, 1052S, 1053S, 1054S, 1055S, 1056S, 1057S, 1058S, 1059S, 1060S, 1061S, 1062S, 1063S, 1064S, 1065S, 1066S, 1067S, 1068S, 1069S, 1070S, 1071S, 1072S, 1073S, 1074S, 1075S, 1076S, 1077S, 1078S, 1079S, 1080S, 1081S, 1082S, 1083S, 1084S, 1085S, 1086S, 1087S, 1088S, 1089S, 1090S, 1091S, 1092S, 1093S, 1094S, 1095S, 1096S, 1097S, 1098S, 1099S, 1100S, 1101S, 1102S, 1103S, 1104S, 1105S, 1106S, 1107S, 1108S, 1109S, 1110S, 1111S, 1112S, 1113S, 1114S, 1115S, 1116S, 1117S, 1118S, 1119S, 1120S, 1121S, 1122S, 1123S, 1124S, 1125S, 1126S, 1127S, 1128S, 1129S, 1130S, 1131S, 1132S, 1133S, 1134S, 1135S, 1136S, 1137S, 1138S, 1139S, 1140S, 1141S, 1142S, 1143S, 1144S, 1145S, 1146S, 1147S, 1148S, 1149S, 1150S, 1151S, 1152S, 1153S, 1154S, 1155S, 1156S, 1157S, 1158S, 1159S, 1160S, 1161S, 1162S, 1163S, 1164S, 1165S, 1166S, 1167S, 1168S, 1169S, 1170S, 1171S, 1172S, 1173S, 1174S, 1175S, 1176S, 1177S, 1178S, 1179S, 1180S, 1181S, 1182S, 1183S, 1184S, 1185S, 1186S, 1187S, 1188S, 1189S, 1190S, 1191S, 1192S, 1193S, 1194S, 1195S, 1196S, 1197S, 1198S, 1199S, 1200S, 1201S, 1202S, 1203S, 1204S, 1205S, 1206S, 1207S, 1208S, 1209S, 1210S, 1211S, 1212S, 1213S, 1214S, 1215S, 1216S, 1217S, 1218S, 1219S, 1220S, 1221S, 1222S, 1223S, 1224S, 1225S, 1226S, 1227S, 1228S, 1229S, 1230S, 1231S, 1232S, 1233S, 1234S, 1235S, 1236S, 1237S, 1238S, 1239S, 1240S, 1241S, 1242S, 1243S, 1244S, 1245S, 1246S, 1247S, 1248S, 1249S, 1250S, 1251S, 1252S, 1253S, 1254S, 1255S, 1256S, 1257S, 1258S, 1259S, 1260S, 1261S, 1262S, 1263S, 1264S, 1265S, 1266S, 1267S, 1268S, 1269S, 1270S, 1271S, 1272S, 1273S, 1274S, 1275S, 1276S, 1277S, 1278S, 1279S, 1280S, 1281S, 1282S, 1283S, 1284S, 1285S, 1286S, 1287S, 1288S, 1289S, 1290S, 1291S, 1292S, 1293S, 1294S, 1295S, 1296S, 1297S, 1298S, 1299S, 1300S, 1301S, 1302S, 1303S, 1304S, 1305S, 1306S, 1307S, 1308S, 1309S, 1310S, 1311S, 1312S, 1313S, 1314S, 1315S, 1316S, 1317S, 1318S, 1319S, 1320S, 1321S, 1322S, 1323S, 1324S, 1325S, 1326S, 1327S, 1328S, 1329S, 1330S, 1331S, 1332S, 1333S, 1334S, 1335S, 1336S, 1337S, 1338S, 1339S, 1340S, 1341S, 1342S, 1343S, 1344S, 1345S, 1346S, 1347S, 1348S, 1349S, 1350S, 1351S, 1352S, 1353S, 1354S, 1355S, 1356S, 1357S, 1358S, 1359S, 1360S, 1361S, 1362S, 1363S, 1364S, 1365S, 1366S, 1367S, 1368S, 1369S, 1370S, 1371S, 1372S, 1373S, 1374S, 1375S, 1376S, 1377S, 1378S, 1379S, 1380S, 1381S, 1382S, 1383S, 1384S, 1385S, 1386S, 1387S, 1388S, 1389S, 1390S, 1391S, 1392S, 1393S, 1394S, 1395S, 1396S, 1397S, 1398S, 1399S, 1400S, 1401S, 1402S, 1403S, 1404S, 1405S, 1406S, 1407S, 1408S, 1409S, 1410S, 1411S, 1412S, 1413S, 1414S, 1415S, 1416S, 1417S, 1418S, 1419S, 1420S, 1421S, 1422S, 1423S, 1424S, 1425S, 1426S, 1427S, 1428S, 1429S, 1430S, 1431S, 1432S, 1433S, 1434S, 1435S, 1436S, 1437S, 1438S, 1439S, 1440S, 1441S, 1442S, 1443S, 1444S, 1445S, 1446S, 1447S, 1448S, 1449S, 1450S, 1451S, 1452S, 1453S, 1454S, 1455S, 1456S, 1457S, 1458S, 1459S, 1460S, 1461S, 1462S, 1463S, 1464S, 1465S, 1466S, 1467S, 1468S, 1469S, 1470S, 1471S, 1472S, 1473S, 1474S, 1475S, 1476S, 1477S, 1478S, 1479S, 1480S, 1481S, 1482S, 1483S, 1484S, 1485S, 1486S, 1487S, 1488S, 1489S, 1490S, 1491S, 1492S, 1493S, 1494S, 1495S, 1496S, 1497S, 1498S, 1499S, 1500S, 1501S, 1502S, 1503S, 1504S, 1505S, 1506S, 1507S, 1508S, 1509S, 1510S, 1511S, 1512S, 1513S, 1514S, 1515S, 1516S, 1517S, 1518S, 1519S, 1520S, 1521S, 1522S, 1523S, 1524S, 1525S, 1526S, 1527S, 1528S, 1529S, 1530S, 1531S, 1532S, 1533S, 1534S, 1535S, 1536S, 1537S, 1538S, 1539S, 1540S, 1541S, 1542S, 1543S, 1544S, 1545S, 1546S, 1547S, 1548S, 1549S, 1550S, 1551S, 1552S, 1553S, 1554S, 1555S, 1556S, 1557S, 1558S, 1559S, 1560S, 1561S, 1562S, 1563S, 1564S, 1565S, 1566S, 1567S, 1568S, 1569S, 1570S, 1571S, 1572S, 1573S, 1574S, 1575S, 1576S, 1577S, 1578S, 1579S, 1580S, 1581S, 1582S, 1583S, 1584S, 1585S, 1586S, 1587S, 1588S, 1589S, 1590S, 1591S, 1592S, 1593S, 1594S, 1595S, 1596S, 1597S, 1598S, 1599S, 1600S, 1601S, 1602S, 1603S, 1604S, 1605S, 1606S, 1607S, 1608S, 1609S, 1610S, 1611S, 1612S, 1613S, 1614S, 1615S, 1616S, 1617S, 1618S, 1619S, 1620S, 1621S, 1622S, 1623S, 1624S, 1625S, 1626S, 1627S, 1628S, 1629S, 1630S, 1631S, 1632S, 1633S, 1634S, 1635S, 1636S, 1637S, 1638S, 1639S, 1640S, 1641S, 1642S, 1643S, 1644S, 1645S, 1646S, 1647S, 1648S, 1649S, 1650S, 1651S, 1652S, 1653S, 1654S, 1655S, 1656S, 1657S, 1658S, 1659S, 1660S, 1661S, 1662S, 1663S, 1664S, 1665S, 1666S, 1667S, 1668S, 1669S, 1670S, 1671S, 1672S, 1673S, 1674S, 1675S, 1676S, 1677S, 1678S, 1679S, 1680S, 1681S, 1682S, 1683S, 1684S, 1685S, 1686S, 1687S, 1688S, 1689S, 1690S, 1691S, 1692S, 1693S, 1694S, 1695S, 1696S, 1697S, 1698S, 1699S, 1700S, 1701S, 1702S, 1703S, 1704S, 1705S, 1706S, 1707S, 1708S, 1709S, 1710S, 1711S, 1712S, 1713S, 1714S, 1715S, 1716S, 1717S, 1718S, 1719S, 1720S, 1721S, 1722S, 1723S, 1724S, 1725S, 1726S, 1727S, 1728S, 1729S, 1730S, 1731S, 1732S, 1733S, 1734S, 1735S, 1736S, 1737S, 1738S, 1739S, 1740S, 1741S, 1742S, 1743S, 1744S, 1745S, 1746S, 1747S, 1748S, 1749S, 1750S, 1751S, 1752S, 1753S, 1754S, 1755S, 1756S, 1757S, 1758S, 1759S, 1760S, 1761S, 1762S, 1763S, 1764S,



UNANU Technologies Pvt Ltd : Mar 2021



Vizru Zero coding platform : Mar 2021



Discussion with Business School of Logistics and Shipping



Discussion with Sairam Engineering College



EDP @ PHA India Pvt Ltd- Irungattukottai
Onsite Training



Career Counselling Program @ Child Home
Onsite training



EDP Training SVCF @ Oragadam Centre



MoU & TIE-UPS Empanelment's VISITS & OTHER ACTIVITIES



AIEMA Visit for Tie-up for facility sharing : 12 Apr 2021



In Process Improvement Discussion @ Customer Site : Mar 2021

Sivarama Krishna Forgings Pvt Ltd

EDP Training SVCF @ Oragadam Centre



Discussion with Sairam Engineering College
for Finishing School Program tie up : Mar 2021



EDP @ PHA India Pvt Ltd- Irungattukottai : 3 Apr 2021



Career Counselling Program @ Child Home : 10 Apr 2021



AIEMA Visit for Tie-up for facility sharing : 12 Apr 2021



Paid Training Program for Industry Requirement Inaugural : 15 Apr 2021



Paid Training Program on Employee Motivation : 15 Apr 2021

ACHIEVEMENTS: Short term programs

**Training Program On
Implant Logistics**



**Executive Development
Program at PHA INDIA PVT LTD**



**Liquid Medical Oxygen Tanker
Driver Training Program**





Ma Foi Strategic
Consultants



India SeAH



Surya Polytechnic College



AIEMA



Govt ITI Ambattur



HIET College Visit

TNASDCL TEAM VISIT TO COMPANY



Dhaanish Ahmed College



CMRL Visit



AIEMA

With above mentioned companies and colleges Team TNASDCL also visited

- CEAT
- CIPET
- Motherson

MoU SIGNED



TRAINING FROM APRIL 2021



RTG Gantry Crane Simulator
Training



Executive Development Program



LMO Tanker Driver Training



In plant Logistics- Improvement



In plant Logistics- Improvement



Executive Development Program

TNASDCL PROGRAMS CONDUCTED



5S Program for Sivaramakrishna Forging Operators



RPL Assessment for Sugi Forklift Operators



Career Guidance Program for MBA students of Sri Krishna Engineering College



CAPA Program for Sri Vigneshwara Forging Operators



RPL Assessment for Sriram Forklift Operators



Executive Development Program for Lucas TVS



RPL Assessment for Sugi Forklift Operators



Delphi TVS Women Empowerment Program



EDP for Rane Madras Limited Pondicherry

TNASDCL TEAM VISIT TO COMPANIES & COLLEGES



Interaction with Queen Mary's College
22/02/2022



Ashok Leyland Driver Training Centre
Namakkal – 04/02/2022



NTC Logistics Driver Training Centre
Namakkal – 04/02/2022



Excel Group Companies – 09/02/2022



Interaction with Srimad Andavan Arts &
Science College 17 Feb 2022

Other Companies and Colleges visited

- Namakkal Lorry Owner Association
- MAM Polytechnic College – Trichy
- Lystm Facility Management Pvt Ltd

TRAINING PROGRAMS CONDUCTED FOR EMPLOYEES



MSA Training Program at Delphi TVS Employees
05 Feb 2022



GD & T Program at Mando for Mid Level Management Staff
15 & 16 Feb 2022

TRAINING PROGRAMS CONDUCTED FOR STUDENTS



Childin Women Trust – 13/02/2022



5 Day Certificate Program - Operational Logistics - 180



GVN Arts and Science College, Kovilpatti – 16/02/2022



Vivekanandha College of Arts and Science, Tiruchengode – 24/02/2022

JICA TEAM VISIT TO TNASDCL ORAGADAM TRAINING CENTRE

25th March 2022



JICA TEAM VISIT TO TNASDCL ORAGADAM TRAINING CENTRE

25th March 2022



FINANCIALS



TNASDCL

GSTIN: 33AAHCT9797R1Z2

PAN: AAHCT9797R

TN APEX SKILL DEVELOPMENT CENTRE FOR LOGISTICS
(A Company registered under Section 8 of the Companies Act, 2013)
CIN: U75142TN2020NPL136648
BALANCE SHEET AS ON 31st MARCH 2022

(Amount in Rs.)

Particulars	Note	Figures as at the end of 31.03.2022	Figures as at the end of 31.03.2021
I. EQUITY AND LIABILITIES			
(1) Shareholder's Funds			
(a) Share Capital	3	2,00,00,000	2,00,00,000
(b) Reserves and Surplus	4	51,87,112	(14,44,229)
(c) Capital Grants		21,45,605	-
(2) Current Liabilities			
(a) Short-term Borrowings	5	3,15,651	20,62,260
(b) Other Current Liabilities	6	13,14,320	3,02,590
(c) Short Term Provisions			
TOTAL		2,89,62,689	2,09,20,620
II.ASSETS			
(1) Non-current assets			
(a) Fixed Assets			
(i) Property, Plant and Equipment	7	26,905	-
(b) Long Term Loans and Advances	8	6,70,005	6,70,005
(c) Other Non-current Assets	9	2,01,89,391	2,52,521
(2) Current Assets			
(a) Trade Receivables	10	6,66,980	-
(b) Cash and Cash Equivalents	11	63,51,897	1,99,98,094
(c) Short-term Loans and Advances	12	7,19,928	-
(d) Other Current Assets	13	3,37,583	-
TOTAL		2,89,62,689	2,09,20,620

TN APEX SKILL DEVELOPMENT CENTRE FOR LOGISTICS

(A Company registered under Section 8 of the Companies Act, 2013)

CIN: U75142TN2020NPL136648

STATEMENT OF PROFIT AND LOSS FOR THE YEAR ENDED 31st MARCH 2022

(Amount in Rs.)

Particulars	Note No.	Figures for the reporting period from 01/04/2021 to 31/03/2022	Figures for the reporting period from 24/07/2020 to 31/03/2021
I. Revenue from operations	14	1,79,77,824	-
II. Other Income	15	10,67,622	-
III. Total Income (I +II)		1,90,45,446	-
IV. Expenses:			
Employee Benefit Expenses	16	24,00,000	-
Depreciation and Amortization Expenses	7	94	-
Other Expenses	17	1,00,14,010	14,44,229
Total Expenses		1,24,14,104	14,44,229
V. Profit before taxes (III - IV)		66,31,342	(14,44,229)
VI. Tax Expenses:			
(1) Current tax & Prior period Taxes		-	-
(2) Mat Credit Entitlement		-	-
(3) Deferred tax		-	-
VII. Profit/(Loss) for the period (V -VI)		66,31,342	(14,44,229)